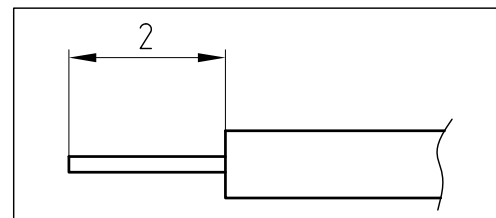
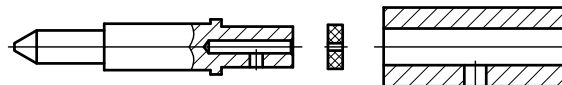
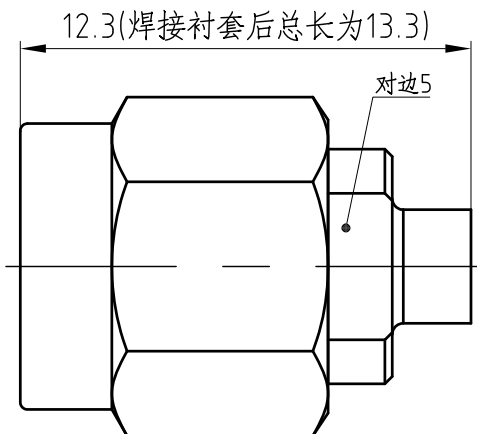


NOTICE OF PROPRIETARY RIGHTS: THIS DRAWING CONTAINS CONFIDENTIAL INFORMATION PROPRIETARY TO Somefly technology Co.,Ltd.
IT MUST NOT BE REPRODUCED OR DISCLOSED TO OTHERS OR USED IN ANY OTHER WAY, IN WHOLE OR PART EXCEPT AS AUTHORIZED
IN WRITING BY Somefly technology Co.,Ltd.

RoHS compliant

| SYM | REVISION | DESCRIPTION | DFTM | DATE | APPD | APPD |
|-----|----------|-------------|------|------|------|------|
| | | | | | | |



NOTES:

1. MATERIALS AND FINISHES:
 BODY - BRASS, GOLD PLATING
 COUPLING NUT - BRASS, GOLD PLATING
 INNER CONTACT - BRASS, GOLD PLATING
 INSULATOR - PTFE, NATURAL
 O-RING - SILICONE RUBBER, RED
2. ELECTRICAL:
 A. IMPEDANCE: 50 OHM
 B. FREQUENCY RANGE: DC - 18 GHz
 C. VSWR: 1.25 MAX. @ DC -18 GHz
 D. INSERTION LOSS: $0.12 \times \sqrt{F(\text{GHz})}$ dB MAX.
 E. VOLTAGE RATING: 250 VRMS
 F. DIELECTRIC WITHSTANDING VOLTAGE: 2000 VRMS MIN.
 G. INSULATION RESISTANCE: 5000 MΩ MIN.
 H. INTERMODULATION 3RD ORDER: N/A dBc MAX. (2 X 43 dBm)

3. MECHANICAL:

- A. DURABILITY: 100 CYCLES MIN.
- B. TEMPERATURE RANGE: -40°C TO +85°C
- C. COMPATIBLE WITH ALL STANDARD: IEC61169-15

CUSTOMER OUTLINE DRAWING
ALL OTHER SHEETS ARE FOR INTERNAL USE ONLY

| | | | | | | |
|------------|--|----------------------|--------------------------------|----------------|----------------------------|----------------------------|
| MATERIAL: | UNLESS OTHERWISE SPECIFIED | | DFTM: 006 | | Somefly technology Co.,Ltd | |
| | ALL DIMENSIONS ARE IN mm MACHINED SURFACES FINISH 1.6RMS MAX. REMOVE ALL BURRS 0.15x45°MAX. BREAK MACHINE CORNERS 0.15x45°D MAX. FILLET R. TOLERANCES ON DECIMALS .X ±0.2 .XX ±0.1 ANGLES: ±2° FRACTIONS: ±N/A | | DATE: 2022.02.09 | | SMA Female For 034 Cable | |
| | | | CHKD HeTong | | SMA-J31H | |
| USED ON: | | | DATE: 2022.02.09 | | APPD: Stone | |
| SCALE: 5/1 | DWG SIZE: A4 | DO NOT SCALE DRAWING | SURFACE (mm ²): xx | WEIGHT (g): xx | DATE: 2022.02.09 | SHT: 218-21H07-7S REV: A.0 |