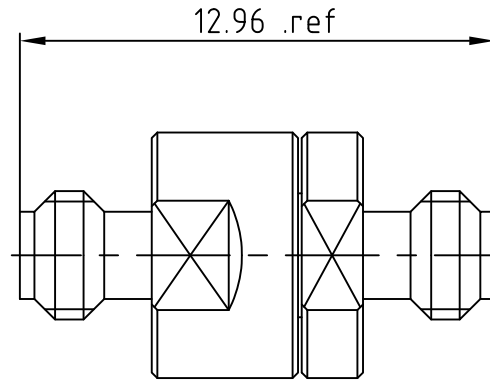


1 2 3 4 5 6
 NOTICE OF PROPRIETARY RIGHTS: THIS DRAWING CONTAINS CONFIDENTIAL INFORMATION PROPRIETARY TO Somefly technology Co.,Ltd.
 IT MUST NOT BE REPRODUCED OR DISCLOSED TO OTHERS OR USED IN ANY OTHER WAY, IN WHOLE OR PART EXCEPT AS AUTHORIZED
 IN WRITING BY Somefly technology Co.,Ltd.

RoHS compliant

SYM	REVISION	DESCRIPTION	DFTM	DATE	APPD	APPD



NOTES:

1. MATERIALS AND FINISHES:
 BODY - STAINLESS STEEL 303, PASSIVATED
 OUTER CONTACT - STAINLESS STEEL 303, PASSIVATED
 INNER CONTACT - BERYLLIUM COPPER, GOLD PLATING
 INSULATOR - PEI

2. ELECTRICAL:
 A. IMPEDANCE: 50 OHM
 B. FREQUENCY RANGE: DC - 145 GHz
 C. VSWR: 1.45 MAX. @ DC - 110 GHz
 D. INSERTION LOSS: $0.12\sqrt{f}$ [GHz] dB MAX.
 E. VOLTAGE RATING: 500 VRMS
 F. INSULATION RESISTANCE: 5000 MΩ MIN.

3. MECHANICAL:
 A. DURABILITY: 200 CYCLES MIN.
 B. TEMPERATURE RANGE: -40°C TO +165°C
 C. COMPATIBLE WITH ALL STANDARD: IEC61169-64

CUSTOMER OUTLINE DRAWING
 ALL OTHER SHEETS ARE FOR INTERNAL USE ONLY

MATERIAL:	UNLESS OTHERWISE SPECIFIED		DFTM: Huang	Somefly technology Co.,Ltd	
	ALL DIMENSIONS ARE IN mm MACHINED SURFACES FINISH 1.6RMS MAX. REMOVE ALL BURRS 0.15×45° MAX. BREAK MACHINE CORNERS 0.15×45° MAX. FILLET R. TOLERANCES ON DECIMALS .X ±0.2 .XX ±0.1 ANGLES±2° FRACTIONS±N/A		DATE: 2023.11.15	0.8mm Female to Female Adaptor	
			CHKD HeTong	0.8mm-KK	
USED ON:	DO NOT SCALE DRAWING		DATE: 2023.11.15	APPD: Stone	
SCALE: 5/1	DWG SIZE: A4	SURFACE (mm²): XX	WEIGHT (g): XX	SHT	002-F6005-CS REV A.0